

The **only** candidate with a proven track record to represent you effectively



IT HAS BEEN an honour to serve as a Conservative Councillor for 16 years, the last 12 representing Titchfield Ward.

For the last 8 years I have been privileged to serve as an Executive Member for Community which also encompasses Housing Strategy and Leisure Services.

This position has allowed me to substantially influence many of the improvements that are now so evident throughout the Borough.

I am a deputy on the Planning & Development Control Committee and a Trustee of the Earl of Southampton Trust, a local charity which has been operating for over 400 years.

During this term of office, I have responded to and helped many people in the Ward and, if re-elected, I will continue to serve and represent the people of Titchfield Ward and the residents of Fareham as a whole.

Before having a family I worked as a PA and had many jobs ranging from working for a director of a private merchant bank in the City to part owning a florist shop in Central Africa.

I have two married children and 6 grand-children, so I am driven by family values, the right of people to make their own decisions and the need for Britain to stay true to its traditions, values and ethics.

A record of action, a promise of more

Dear Elector

YOU MIGHT ask what motivated me to join the Conservative Party and later to enter local politics, to attend meetings, knock on doors for so many years, to argue for improvement and change.

I've always been a 'people person' and it is 'people' that are important to me, trying to help solve problems, to improve their life style and trying to 'make a difference' for the folk I represent.

I have not always been able to make that difference but I know I have, in some small way, contributed to ensuring that where I was able to help and influence change came about.

If I am re-elected as a Borough Councillor for Titchfield, I will use my years of experience to devote full-time to serving my constituents, regardless of which party they support.

The delightful Ward of Titchfield, which includes Catisfield, Segensworth and parts of Ranvilles, is extremely important to me and I work with many local organisations giving help and support when and where required.

If re-elected, Connie promises to continue:

- Working with** Hampshire County Council to ensure that faulty street lighting is swiftly corrected, damaged footpaths, uneven pavements and road carriageways are maintained in a good state of repair, particularly since the bad winter. Appleton Road, Woodbourne Close are excellent examples.

- Working with** local residents at the earliest possible stage where significant planning applications are likely in order to ensure the quality of life for existing residents is preserved as much as possible.

- Working with** our local Police Community Support Officers and others in the area to further reduce levels of vandalism and anti-social behaviour.

- Working with** the many sporting clubs, community facilities and voluntary groups there are locally and throughout the Borough.

- Supporting** the provision of facilities for the younger residents of the Ward, and Borough. I have enabled 5 skate parks to be installed in the Borough and many facilities for younger children have been updated; there is now a rolling programme for refurbishing others, such as the play area at Bellfield.

- Supporting** and playing an active role in the excellent achievements of the Conservative administration in Fareham.

- Ensuring** that Fareham's Council Tax remains one of the lowest in the Country. As a Conservative, I believe government, national or local, should take less of people's money and I will continue to remember that the money spent by the Council is 'yours and mine' and needs to be spent wisely.

Always about people. Consistently about caring.

VOTE CONSERVATIVE

More good reasons to vote Conservative

Connie, Geoff and Tiffany ... by far the best team around



CONNIE HOCKLEY is married to Geoff who has represented Titchfield Common Division as a County Councillor for the past 5 years.

She said: "He works tirelessly for the residents of his Division and I must say

it is helpful having an 'listening ear' when County problems or issues arise.

"My other colleague is Tiffany Harper. Between us we work for and represent the Ward of Titchfield.

"Tiffany was newly elected in 2008 and has proved to be a real asset and a pleasure to work with.

"We have successfully worked together on local Community Action Team requests.

"For example, land at the end of Gardner Road, Titchfield has been revitalised by the local community with the help of this funding stream and a new bench has been installed halfway up Southampton Hill at the request of local residents.

"I am convinced that Geoff, Tiffany and I make a great team and complement each other in our day-to-day work



Geoff Hockley

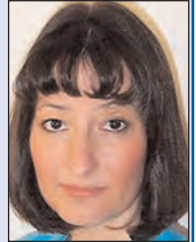
for the Ward and the Borough.

"Finally, I ask for your vote because I can continue to make a difference. I can't promise to solve every problem but I will certainly try as hard as humanly possible.

"If I am re-elected, I will continue to ensure Titchfield Ward is well represented and work with residents and Hampshire County Council to try to address the ever-worsening traffic problems and 'rat-runs' caused to all areas of the Ward.

"Mainly, though, I will continue to be available to listen, help and advise. Thank you for your support."

Connie Hockley
27 Heath Lawns
Catisfield PO15 5QB
Tel: (01329 287365)



Tiffany Harper

Polling day is Thursday, May 6

CONSERVATIVES are your wisest choice

X

HOCKLEY

VOTE CONSERVATIVE

Promoted by Geoff Hockley, 27 Heath Lawns PO15 5QB on behalf of Connie Hockley, 27 Heath Lawns PO15 5QB.
Printed by Bishops Printers, Fitzherbert Road, Farlington, Portsmouth PO6 1RU.